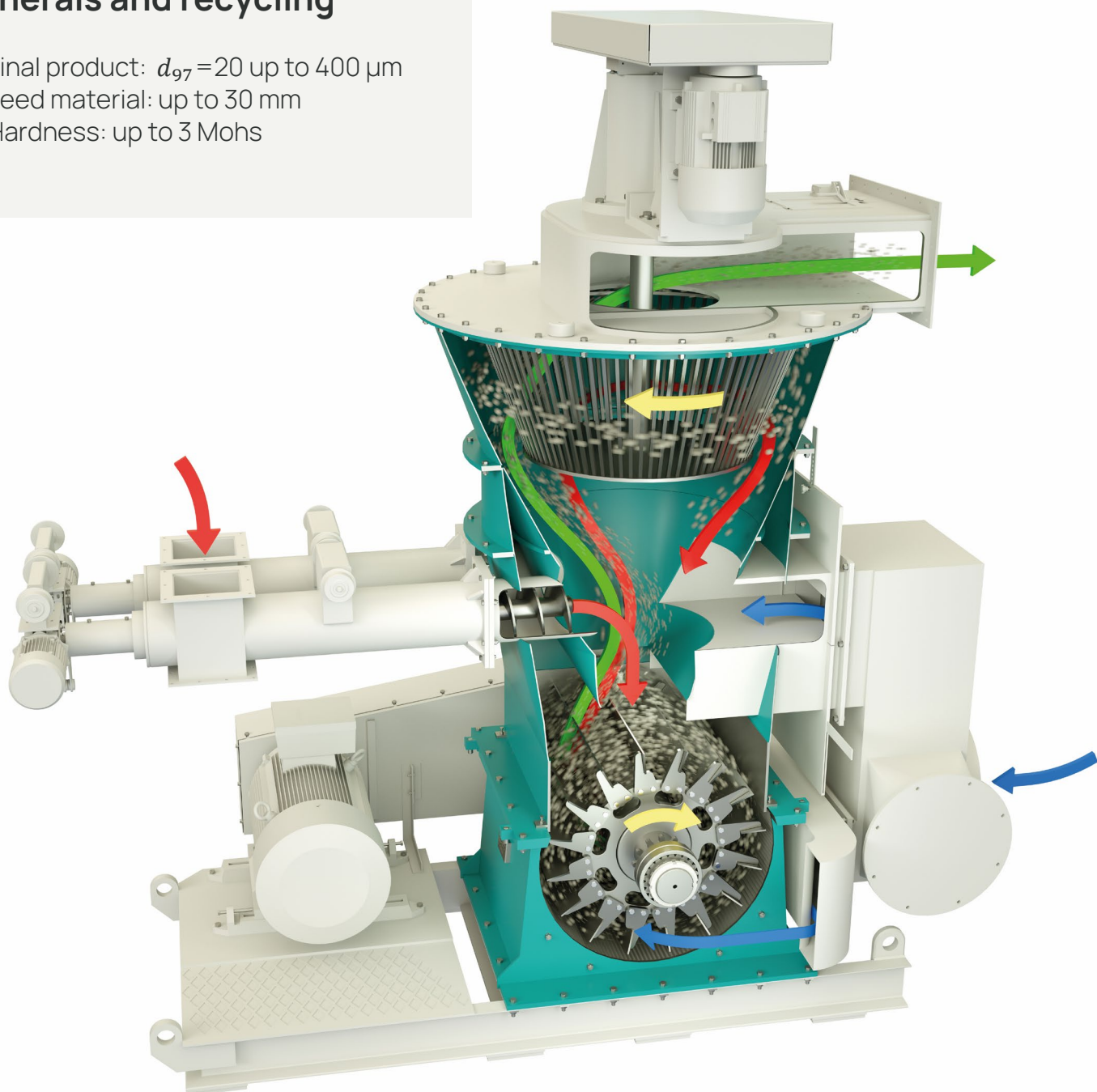


TurboGrinder

For desagglomeration,
grinding, drying of soft
minerals and recycling

- Final product: $d_{97} = 20$ up to $400 \mu\text{m}$
- Feed material: up to 30 mm
- Hardness: up to 3 Mohs



The TurboGrinder in a glance

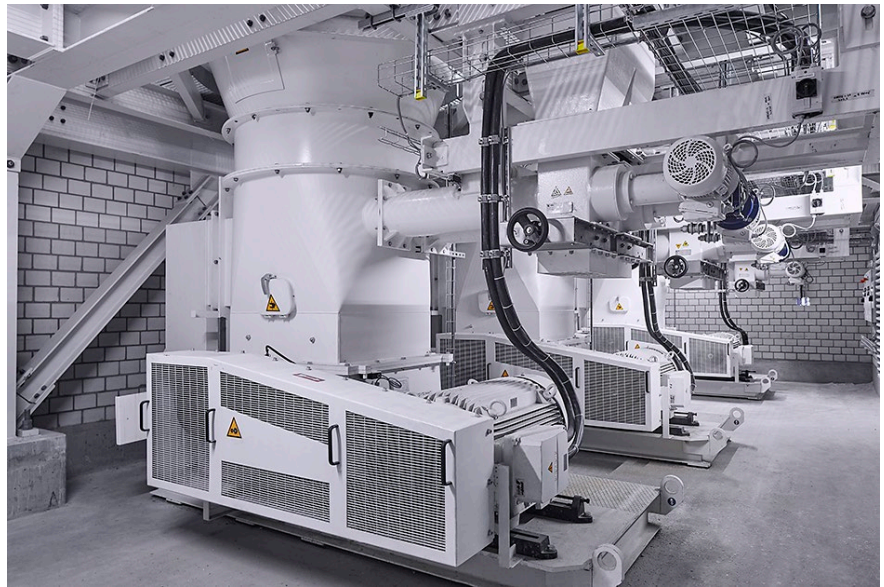
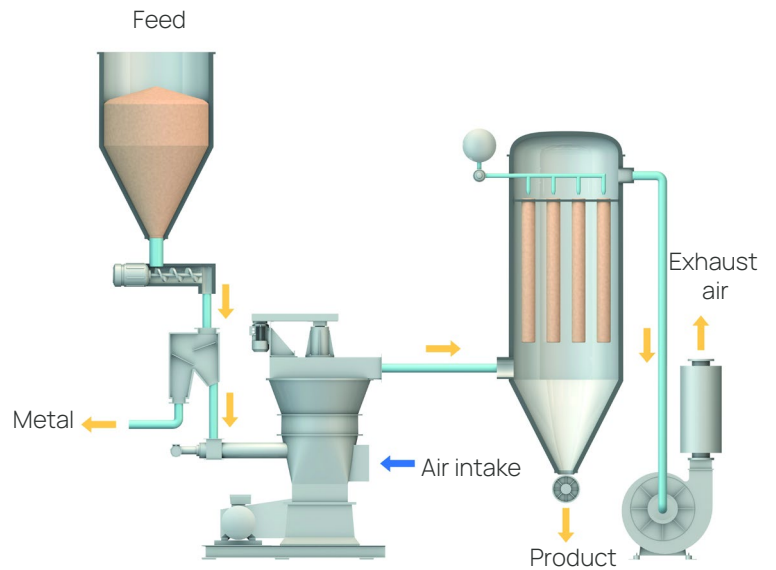
- Impact/Attrition mill
- Incorporated air classifier
- Simultaneous grinding and drying possible
- Moistures up to 25 % possible

Operation Principle

The material to be ground is reduced by the high impact and shear forces generated by the mill rotor. The airflow allows a continuous process. The product fineness is adjustable by the speed of the incorporated dynamic air classifier. In case of simultaneous grinding and drying hot air is introduced in the grinding zone.

Advantages

- Simple machine construction
- Easy maintenance
- Wear parts easy to exchange



Mill size TG	Rotor		Motor power kW	Airflow M ³ /h	Capacity range t/h
	Diameter mm	Width mm			
50-15	500	150	7.5 - 11	6500	0.05 - 0.75
50-30	500	300	15 - 22	8000	0.1 - 1.5
100-30	1000	300	30 - 35	10000	0.2 - 3.0
100-60	1000	600	55 - 90	14000	0.4 - 6.0
100-90	1000	900	90 - 160	16000	0.6 - 9.0
150-90	1500	900	110 - 200	18000	0.9 - 12